

FACULTY OF ECONOMICS AND
BUSINESS



INTERNAL QUALITY ASSURANCE SYSTEM

BOOK I THE QUALITY POLICY



QUALITY ASSURANCE AND INFORMATION
SYSTEM UNIT
UNIVERSITY OF HALU OLEO
2020



**KEPUTUSAN
FAKULTAS EKONOMI DAN BISNIS UNIVERSITAS HALU OLEO
NOMOR : 5426/UN29.6/KP/2020**

**TENTANG
DOKUMEN SISTEM PENJAMINAN MUTU INTERNAL
FAKULTAS EKONOMI DAN BISNIS UNIVERSITAS HALU OLEO TAHUN 2020**

DEKAN FAKULTAS EKONOMI DAN BISNIS

- Menimbang** : a bahwa dalam rangka memenuhi Standar Nasional Pendidikan Tinggi secara konsisten dan berkelanjutan sebagai wujud akuntabilitas public kepada pihak yang berkepentingan, dipandang perlu untuk melaksanakan Penjaminan Mutu di Fakultas Ekonomi dan Bisnis Universitas Halu Oleo;
- b bahwa untuk melaksanakan penjaminan mutu yang tertuang dalam Sistem Penjaminan Mutu Internal Internal (SPMI) Fakultas Ekonomi dan Bisnis Universitas Halu Oleo, dipandang perlu Menyusun Dokumen Sistem Penjaminan Mutu Internal Internal (SPMI);
- c bahwa untuk keperluan pada butir a dan b di atas, perlu penetapan dengan Keputusan Dekan.
- Mengingat** : 1 Undang – undang Nomor 20 tahun 2003, tentang Peraturan Pendidikan Nasional
Keputusan Presiden RI Nomor 101 / M / Tahun 2008
Peraturan Pemerintah Nomor 66 Tahun 2010 tentang Pendidikan Tinggi
Keputusan Menteri Keuangan RI No.37/KMK.05/2010 tentang Penetapan UHO sebagai Pengelola Keuangan – Badan Layanan Umum
Peraturan Menteri Pendidikan dan Kebudayaan Nomor 43/2012 Tentang Statuta Universitas Halu Oleo
Peraturan Akademik Universitas Halu Oleo No: 4173a/UN29/SK/J29/PP/2013
Peraturan Mendikbud RI Nomor 149 Tahun 2014, tentang Organisasi dan Tata Kerja Universitas Halu Oleo
Permenristekdikti Nomor 50 Tahun 2018 tentang Perubahan atas Permenristekdikti Nomor 44 Tahun 2015 tentang Standar Nasional Pendidikan Tinggi.
Peraturan Rektor Nomor 1 Tahun 2019 Peraturan Akademik di Lingkungan Universitas Halu Oleo.
- Memperhatikan** : Surat Senat Fakultas Ekonomi dan Bisnis Tanggal 21 Oktober 2020 Nomor 5222/UN29.6.SF/KP/2020 tentang Persetujuan Dokumen Standar Mutu Internal (SPMI) Fakultas Ekonomi Tahun 2020.

MEMUTUSKAN

- Menetapkan **KEPUTUSAN DEKAN FAKULTAS FARMASI TENTANG TENTANG DOKUMEN SISTEM PENJAMINAN MUTU INTERNAL (SPMI) FAKULTAS EKONOMI DAN BISNIS UNIVERSITAS HALU OLEO**
- PERTAMA** : Dokumen Sistem Penjaminan Mutu Internal (SPMI) Fakultas Ekonomi dan Bisnis Universitas Halu Oleo disusun sebagai pedoman dalam penetapan, pelaksanaan/pemenuhan, pengendalian, dan pengembangan Standar Sistem Penjaminan Mutu Internal baik di bidang akademik maupun non akademik;
- KEDUA** : Dokumen Sistem Penjaminan Mutu Internal (SPMI) Fakultas Ekonomi dan Bisnis Universitas Halu Oleo Tahun Akademik 2020/2021 menjadi rujukan dalam penyusunan, pelaksanaan, pengendalian, dan pengembangan Standar Sistem Penjaminan Mutu Internal;
- KETIGA** : Dokumen Sistem Penjaminan Mutu Internal (SPMI) Fakultas Ekonomi dan Bisnis Universitas Halu Oleo adalah dokumen yang terdiri atas Dokumen Kebijakan SPMI, Dokumen Manual SPMI, Dokumen Standar SPMI, dan Dokumen Fomulir SPMI;
- KEEMPAT** : Dokumen Kebijakan SPMI Fakultas Ekonomi dan Bisnis Universitas Halu Oleo adalah dokumen yang berisi garis besar tentang implementasi SPMI dalam penyelenggaraan Pendidikan tinggi sehingga terwujud budaya mutu pada Fakultas Ekonomi dan Bisnis Universitas Halu Oleo;
- KELIMA** : Dokumen manual SPMI adalah dokumen berisi petunjuk teknis tentang cara, Langkah, atau prosedur tentang penetapan, pelaksanaan, evaluasi, pengendalian, dan peneingkatan (PPEPP) standar Pendidikan tinggi secara berkelanjutan oleh pihak yang bertanggungjawab dalam Implementansi SPMI di Fakultas Ekonomi dan Bisnis Universitas Halu Oleo;
- KEENAM** : Dokumen Standar SPMI adalah dokumen berisi berbagai kriteria ukuran, patokan, atau spesifikasi dari setiap kegiatan penyelenggaraan Pendidikan tinggi di Fakultas Ekonomi dan Bisnis Universitas Halu Oleo untuk mewujudkan visi dan misinya sehingga terwujud budaya mutu di Fakultas Ekonomi dan Bisnis Universitas Halu Oleo;
- KETUJUH** : Dokumen Formulir SPMI adalah naskah tertulis berisi Kumpulan formular yang digunakan dalam mengimplementasikan standar dalam SPMI dan berfungsi untuk mencatat/merekam hal, informasi atau kegiatan baru Ketika standar dalam penerapan SPMI;
- KEDELAPAN** : Dokumen Standar Penjaminan Mutu Internal (SPMI) Fakultas Ekonomi dan Bisnis Universitas Halu Oleo Tahun Akademik 2020/2021 menajadi rujukan atau pedoman dalam pelaksanaan kegiatan sekaligus pengendali bagi setiap unit kerja dalam merencanakan program kerja dan anggaran, monitoring, evaluasi, audit mutu internal, serta perbaikan mutu secara berkelanjutan;
- KESEMBILAN** : Dalam penetapan pelaksanaan pengendalian, pengembangan, peningkatan Standar Penjaminan Mutu Internal (SPMI) Fakultas Ekonomi dan Bisnis Universitas Halu Oleo Tahun Akademik

2020/2021, Koordinator Jaminan Mutu dan Sistem Informasi ditugaskan untuk melakukan koordinasi secara sinergis dengan pimpinan – pimpinan unit kerja dalam rangka penjabaran langkah – langkah strategis yang diperlukan demi tercapainya sasaran mutu Fakultas Ekonomi dan Bisnis Universitas Halu Oleo yang tertuang dalam Dokumen Standar Penjaminan Mutu Internal (SPMI) Fakultas Ekonomi dan Bisnis Universitas Halu Oleo;

- KESEPULUH : Unit Jaminan Mutu dan Sistem Informasi ditugaskan untuk menyelenggarakan penjaminan mutu akademik dan non akademik secara keseluruhan di Fakultas Ekonomi dan Bisnis Universitas Halu Oleo dengan melakukan monitoring, evaluasi, serta audit internal dalam proses implementasi penjaminan mutu di Fakultas Ekonomi dan Bisnis Universitas Halu Oleo;
- KESEBELAS : Hal – hal yang belum diatur dalam keputusan ini akan ditetapkan dalam ketentuan tersendiri;
- KEDUABELAS : Dokumen Standar Penjaminan Mutu Internal (SPMI) Fakultas Ekonomi dan Bisnis Universitas Halu Oleo akan ditinjau Kembali setelah 3 (tiga) tahun diberlakukan;
- KETIGABELAS : Apabila di kemudian hari terdapat kekeliruan dalam keputusan ini, akan diadakan perbaikan sebagaimana mestinya;
- KEEMPATBELAS : Keputusan ini mulai berlaku terhitung sejak tanggal ditetapkan.

Ditetapkan di : KENDARI
Pada Tanggal : 26 November 2020


DEKAN,





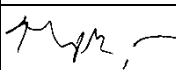


Prof. Dr. H. Arifuddin, SE. M.Si. Ak. CA. ACPA
NIP. 196804261995121001

Tembusan :

1. Rektor Universitas Halu Oleo
2. Ketua LPPMP UHO
3. Arsip

	<p align="center">HALU OLEO UNIVERSITY FACULTY OF ECONOMICS AND BUSINESS Bumi Tridharma Anduonohu Green Campus Jl. H.E.A. Mokodompit, Kendari 93232 www.feb.uho.ac.id</p>	<p align="center">Code/No: SPMI-FEB-UHO-KS</p>
	SPMI POLICY	Date 12-09-2019
		Revision: 1
		Page 1 of 17

SPMI POLICY
FACULTY OF ECONOMICS AND BUSINESS
HALU OLEO UNIVERSITY

Process	Person in Charge			Date
	Name	Position	Signature	
1. Formulation	Prof Dr Muhammad Nasir, SE, M.Si	UJMSI Coordinator		10-07-2019
2. Inspection	Dr La Ode Suriadi, SE, M.Si	Vice Dean for Academic Affairs		12-09-2019
3. Approval	Prof. Dr LM. Harafah, SE, M.Si	Chair of the Senate		20-10-2019
4. Designation	Prof. Dr H. Arifuddin Mas'ud, S.E., M.Si.	Dean		14-11-2019
5. Control	Prof Dr Muhammad Nasir, SE, M.Si	UJMSI Coordinator		14-11-2019

I. VISION AND MISSION OF FACULTY OF ECONOMICS AND BUSINESS, HALU OLEO UNIVERSITY

Vision of UHO Faculty of Economics and Business

The vision of the Faculty of Economics and Business (FEB) UHO is "To become a world-class faculty in producing human resources in the fields of economics and business based on coastal, marine, and rural areas by 2045".

Mission of UHO Faculty of Economics and Business

1. Develop national and/or international collaborative research-based education by utilizing advances in information technology so that graduates can compete and adapt at a global level;
2. Developing excellent research oriented towards coastal, marine, and rural areas, as well as publications and intellectual property acquisition;
3. Applying the results of research and intellectual products of national and/or international standards for the welfare of institutions and society, as well as the advancement of science and technology;and
4. Strengthening the FEB UHO governance system to be transparent, accountable, and credible so that it can provide excellent services for high-quality education;
5. Developing student potential in the fields of spirituality, reasoning, sports, arts, culture, and entrepreneurship that supports comprehensive intelligence to build an academic atmosphere.

Goals of UHO Faculty of Economics and Business

1. Increased Competitiveness and Adaptability of Graduates at National and Global Levels
2. Increased Number of Research Publications and Acquisition of Rights.
3. Increased Research Results and other Superior Intellectual Products have been applied to the Welfare of Institutions, Society and the Advancement of Science and Technology.
4. Achieving an improved governance system.
5. Increasing the Potential and Achievements of FEB UHO Students in the Fields of Spirituality, Reasoning, Sports, Arts, Culture, and Entrepreneurship.

Background of Faculty of Economics and Business Implementing SPMI

The Faculty of Economics and Business of Halu Oleo University Kendari was established along with the inauguration of Halu Oleo University Kendari on August 19, 1981, based on the Presidential Decree of the Republic of Indonesia No. 37 of 1981. At the beginning of the establishment of Halu Oleo University, there were only four faculties including. (1) Faculty of Economics, (2) Faculty of Agriculture, (3) Faculty of Social and Political Sciences, and (4) Faculty of Teacher Training and Education. Initially, Halu Oleo State University was the forerunner of the Private Halu Oleo University which was managed by YP3T based on the Notary Deed of the Governor of the Regional Head of Level I of Southeast Sulawesi Province No. 15 dated 1 June 1964. In 1974, the Faculty of

Economics obtained a Registered Status based on the Decree of the Coordinator of Kopertis Region VII No. 7/KPT/UN/74 Dated December 2, 1974, in Ujung Pandang, with two departments: (1) Department of General Economics and (2) Department of Company Management.

Based on the results of the consortium of Economic Sciences held in Denpasar, Bali Province in December 1981, the Faculty of Economics of Halu Oleo University changed the name of the department to: (1) Department of Economics and Development Studies (IESP) and (2) Department of Management. The name change was based on the Decree of the Minister of Education and Culture of the Republic of Indonesia Number 0576/Q/1983, dated December 8, 1983. Along with the development and demands of the community, in 1995/1996 the Accounting Study Programme was opened under the auspices of the Management Department based on Rector's Decree Number 94/SK/J29/KP/1994. Along with the development of the Accounting Department at that time, the Accounting Study Programme was upgraded to the Accounting Department, based on the Decree of the Director General of Higher Education Number 31/DIKTI/Kep/1996.

Since the 1994/1995 Academic Year, the Extension Programme (Evening Regular Programme) has been opened based on Rector's Decree No. 49/SK/42.H/Q/1994, which was further strengthened by the issuance of the Decree of the Director General of Higher Education, No. 425/DIKTI/Kep/1996, which included several departments: (1) Department of Economics and Development Studies, (2) Department of Accounting, and (3) Department of Management. Along with the development of progress and the demands of society at that time, in 2008/2009, the Faculty of Economics and Business opened a Master of Management Study Programme based on the Decree of the Director General of Higher Education Number 2426/D/T/2008, which included several concentration programs, namely, (1) Finance Concentration, (2) Marketing Concentration, and (3) Human Resources Concentration. Thus, until now, the Faculty of Economics and Business, Halu Oleo University has 4 (four) departments and study programmes: (1) Economics and Development Studies, (2) management, (3) accounting, and (4) Master of Management. The FEB UHO successfully obtained national-level accreditation. As an indicator of nationally accredited study programs, three study programs at FEB UHO managed to get "A" accreditation and 1 study programme was accredited "B" in BAN-PT. The increase that continues every year indicates that FEB UHO focuses on the quality of the learning process.

The internal quality assurance system within FEB UHO is implemented by the Education Quality Assurance and Development Agency (LPPMP) through the Faculty Quality Assurance Unit (UJM). In FEB UHO, UJM was assisted by K2JM, which was formed in each study program. The internal quality assurance system was carried out by referring to the Halu Oleo University Rector Regulation Number 7411/UN29/PR/2014 concerning Amendments to the Halu Oleo University Rector Regulation Number 02 of 2019

concerning the Internal Quality Assurance System (SPMI) of Halu Oleo University. The quality assurance system at Halu Oleo University was implemented by the Education Quality Assurance and Development Institute in coordination with the Quality Assurance and Information Systems Unit at the faculty level. To support the implementation of quality assurance at the study programme level, the Dean of the Faculty of Economics and Business established departmental and study programme-level QA organs, namely the Quality Assurance Working Group (KKJM) and the Quality Assurance Monitoring Team (TMJM), in accordance with the Decree of the Dean of the Faculty of Economics and Business Number 936//UN29.6/SK/KP/2021. The implementation of internal quality assurance tasks has been equipped with SPMI documents consisting of SPMI Policy, SPMI Manual, SPMI Standards, and Quality Forms as stated in the Decree of the Dean of the Faculty of Economics and Business, Halu Oleo University Number:5426/UN29.6/KP/2020 concerning Internal Quality Documents of SPMI Faculty of Economics and Business, Halu Oleo University concerning Internal Quality Assurance System Documents of the Faculty of Economics and Business, Halu Oleo University.

Fulfilment of quality standards that have been set and evaluated periodically every year through an Internal Quality Audit (AMI). The implementation of the audit begins with the visitation and inspection of study program standards, the results of which are outlined in the audit report. The audit report then becomes the basis for decision making to follow up on audit findings as a form of improvement and academic and non-academic development. An Internal Quality Audit (AMI) is conducted in accordance with the Determination, Implementation, Evaluation, Control, and Improvement (PPEPP) cycle.

II. PURPOSE OF UHO FACULTY OF ECONOMICS AND BUSINESS SPMI POLICY DOCUMENT

The UHO Faculty of Economics and Business's SPMI policy document is as follows:

1. A means of communicating with all stakeholders about SPMI that applies to the FEB UHO environment.
2. The foundation and direction for setting all Standards in SPMI and the UHO SPMI Manual in improving the quality of SPMI Faculty of Economics and Business UHO.
3. Authentic evidence shows that the Faculty of Economics and Business UHO has owned and implemented SPMI, as required by laws and regulations.

III. SCOPE OF SPMI POLICY FACULTY OF ECONOMICS AND BUSINESS UHO

The SPMI policy of the Faculty of Economics and Business UHO covers all aspects of higher education implementation, with a focus on academic aspects (education, research, and community service) and other aspects (non-

academic) that support these academic aspects. Nonacademic aspects include vision and mission standards, cooperation standards, new student admission standards, quality assurance standards, governance standards, information system standards, academic atmosphere standards, public facilities and infrastructure standards, and campus environment management standards.

This SPMI Policy Document will determine the scope of the Halu Oleo University FEB SPMI standards for academic and non-academic aspects consisting of: (1) National Higher Education Standards and (2) Higher Education Standards set by UHO. The level of achievement of each standard is as follows: (1) description of standards in Permenritekdikti No. 44 of 2015 concerning National Higher Education Standards with achievement levels meeting or exceeding standards, (2) UHO's Vision-Mission formulated at the achievement level of the Performance Indicators in the UHO Strategic Plan, and (3) Vision-Mission of the UHO Faculty of Economics and Business.

IV. ENFORCEABILITY OF UHO FACULTY OF ECONOMICS AND BUSINESS SPMI POLICY

The SPMI policy of the UHO Faculty of Economics and Business applies to all units within the UHO Faculty of Economics and Business:

1. The Faculty of Academic Senate approved the Internal Quality Assurance System document of the Faculty of Economics and Business, UHO.
2. The Dean determines, supervises, and ensures the implementation of the SPMI within the Faculty of Economics and Business UHO.
3. The Vice Deans assist the dean in supervising and ensuring the implementation of SPMI within the Faculty of Economics and Business UHO.
4. The Head of the Department and Coordinator of the Study Program ensures the implementation of SPMI in the department/programme of study.
5. The Head of Laboratory supervises and ensures the implementation of SPMI in his/her environment.
6. The Quality Assurance and Information System Unit (UJMSI) formulates standards, develops standards, monitors, and coordinates the implementation of quality audits, management review meetings, and SPMI improvement according to the PPEPP cycle.

V. TERMS AND DEFINITIONS

1. The Internal Quality Assurance System of the Faculty of Economics and Business, Halu Oleo University (SPMI FEB UHO) is a systemic activity of higher education quality assurance conducted by the Faculty of Economics and Business UHO autonomously and independently to control and improve

the implementation of higher education at the Faculty of Economics and Business UHO in a planned and sustainable manner.

2. Quality assurance is the process of setting and fulfilling management standards consistently and continuously, so that consumers, producers, and other interested parties are satisfied.
3. National Education Standards are the minimum criteria for the education system in all jurisdictions of the Republic of Indonesia.
4. National Research Standards are the minimum criteria regarding the research system in higher education that applies throughout the jurisdiction of the Unitary State of the Republic of Indonesia.
5. National Community Service Standards are the minimum criteria regarding the community service system in higher education that applies throughout the jurisdiction of the Unitary State of the Republic of Indonesia.
6. Graduate competency standards are the minimum criteria regarding qualifications that include attitudes, knowledge, and skills expressed in the formulation of learning outcomes.
7. Learning content standards are the scope of material and level of competence, as outlined in the criteria regarding graduate competencies, study material competencies, subject competencies, and semester learning plans, which must be met by students at certain levels and types of education.
8. The learning process standards are national education standards related to the implementation of learning in one education unit to achieve graduate competency standards.
9. Educator and education personnel standards are criteria for pre-service education, physical and mental fitness, and in-service education.
10. Facilities and infrastructure standards are national education standards relating to minimum criteria for learning spaces, places to exercise, places of worship, libraries, laboratories, workshops, places to play, places for creativity and recreation, and other learning resources that are needed to support the learning process, including the use of information and communication technology.
11. Management standards are national education standards relating to the planning, implementation, and supervision of educational activities at the education unit level in order to achieve the efficiency and effectiveness of education provision.
12. Financing standards regulate the components and amount of investment costs, education unit operational costs, and personal costs that apply for one year.

13. Educational assessment standards are national standards related to mechanisms, procedures, and instruments for assessing student learning outcomes.
14. The curriculum comprises a set of plans and arrangements regarding the objectives, content, and learning materials, as well as the methods used as guidelines for organizing learning activities to achieve certain educational goals.
15. Policies are written statements that explain thoughts, attitudes and views on something
16. The FEB UHO SPMI policy includes the thoughts, attitudes, and views of FEB UHO regarding SPMI that applies at FEB UHO.
17. The FEB UHO SPMI Manual contains practical instructions on how to run or implement SPMI at FEB UHO.
18. The FEB UHO SPMI Standard is a criterion that shows the level of performance achievement expected and is used to measure and describe the quality requirements and work achievements of individuals or work units within FEB UHO that exceed the National Higher Education Standards.
19. Self-evaluation is the activity of each unit within the scope of FEB UHO periodically to examine, analyze, and assess its own performance over a certain period of time to determine its weaknesses and shortcomings.
20. The FEB UHO SPMI Audit is a routine activity carried out by UHO internal auditors at the end of each academic year to examine the implementation of FEB UHO SPMI and evaluate whether all SPMI standards of the UHO Faculty of Economics and Business have been achieved or fulfilled by each unit within the UHO Faculty of Economics and Business.
21. An internal Auditor is a person or group of people with certain qualifications who conduct internal audits within the UHO environment.
22. Quality culture is a mindset, attitude, and behavior pattern based on standards implemented by all *internal stakeholders* at the FEB UHO.

VI. DETAILS OF SPMI POLICY FACULTY OF ECONOMY AND BUSINESS

UHO Purpose of SPMI FEB Universitas Halu Oleo

All academicians and education personnel of the Faculty of Economics and Business UHO believe that the SPMI Faculty of Economics and Business UHO aims to

- a. Ensure that every educational service for students is carried out according to the established SPMI Standards of the Faculty of Economics and Business UHO. If it is known that the standard is not of quality or that there is a

deviation between the real conditions and the standard, it will be immediately corrected.

- b. Realizing transparency and accountability to the community, especially parents/guardians of students, regarding the implementation of higher education in accordance with the established SPMI Standards of the Faculty of Economics and Business UHO.
- c. Invite all parties in the Faculty of Economics and Business UHO to work towards achieving goals based on SPMI Standards and continuously strive to improve quality.

Management Model for SPMI Implementation in Faculty Of Economics And Business Uho

SPMI was designed, implemented, and continuously improved at the Faculty of Economics and Business UHO based on the PPEPP model (determination, implementation, implementation evaluation, implementation control, and improvement). Through this model, the UHO Faculty of Economics and Business first determines the objectives to be achieved through appropriate strategies and a series of activities. The achievement of goals through these strategies and activities will always be monitored regularly, evaluated, and developed in a better direction on an ongoing basis.

The fundamental spirit of a quality assurance system is *the continuous improvement* and quality enhancement. SPMI management to encourage continuous and quality improvement is achieved by implementing each quality standard following the PPEPP stage, which consists of the following:

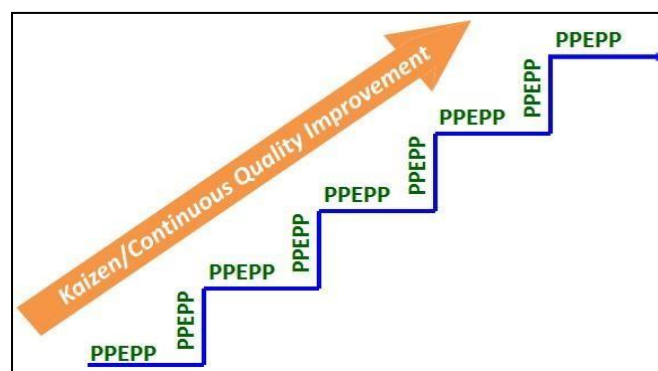
- a. Determination (P) of Standards in SPMI, namely the formulation and determination of standards or measures consisting of National Higher Education Standards and Higher Education Standards set by the Faculty of Economics and Business UHO UHO.
- b. Implementation (P) of Standards in SPMI, namely, activities to fulfil standards or measures consisting of National Higher Education Standards and Higher Education Standards set by the UHO Faculty of Economics and Business.
- c. Evaluation (E) of Standard Implementation in SPMI, which compares the outcomes of activities to fulfil standards or measures with standards or measures consisting of National Higher Education Standards and Higher Education Standards set by the Faculty of Economics and Business UHO UHO.
- d. Control (P) of Standards in SPMI, namely activities to analyse the causes of standards or measures consisting of National Higher Education Standards and Higher Education Standards set by the UHO Faculty of Economics and Business that are not achieved for corrective action; and

e. Improvement (P) of Standards in SPMI, namely activities to improve standards or measures consisting of National Higher Education Standards and Higher Education Standards set by the UHO Faculty of Economics and Business, is higher than the standards in the existing SPMI.

Using the PPEPP management model, each unit within the Faculty of Economics and Business UHO must periodically conduct a self-evaluation process to assess the performance of its own unit using predetermined standards and procedures. The results of the self-evaluation will be reported to the unit leader, all staff in the unit concerned, and the leadership of the UHO Faculty of Economics and Business. Based on the results of the self-evaluation, unit leaders and leaders of the UHO Faculty of Economics and Business will make decisions about steps or actions that must be taken to improve quality.

Implementing SPMI with the PPEPP management model also requires each unit in the UHO Faculty of Economics and Business to be open, cooperative, and ready to be audited or examined by a team of internal auditors who have received special training in internal quality audits (AMI). Audits conducted at the end of each academic year will be recorded and reported to unit leaders and leaders of the UHO Faculty of Economics and Business and then take certain actions based on the findings and recommendations of the Auditor Team.

All of these processes are intended to ensure that every higher education activity at the Faculty of Economics and Business UHO is guaranteed quality, and that university SPMI is also always evaluated to find its strengths and weaknesses so that changes can be made towards continuous improvement. The result of the implementation of SPMI based on the PPEPP management model (Figure 1) is the readiness of all study programs in UHO to follow the accreditation or external quality assurance process either by LAMPT-Kes or credible foreign accreditation agencies.



SPMI implementation management model

Principles in Implementing SPMI Faculty of Economics and Business UHO

To achieve the SPMI objectives of the Faculty of Economics and Business UHO mentioned above and to realize the vision, mission, and objectives of the Faculty of Economics and Business UHO, all members of the Faculty of Economics and Business UHO in implementing SPMI at every level within the Faculty of Economics and Business UHO are always guided by the following principles:

- a. Autonomous, namely the SPMI Policy of the UHO Faculty of Economics and Business, was developed independently and independently by the UHO Faculty of Economics and Business and implemented within the scope of the UHO Faculty of Economics and Business.
- b. Standardized, namely the SPMI Policy of the UHO Faculty of Economics and Business, uses Higher Education Standards derived from the National Higher Education Standards and is expanded by referring to the vision and mission, the UHO Faculty of Economics and Business, and external quality assurance criteria (accreditation).
- c. Accuracy, i.e. The SPMI uses accurate and reliable data and information (*speaking with data*).
- d. Planned and sustainable (SPMI) is implemented in one cycle of Determination-Enforcement-Evaluation-Control-Improvement (PPEPP) gradually and continuously.
- e. Documented, where all activities are systematically documented and easily accessible.

UHO Faculty of Economics and Business SPMI Strategy

The strategies of the Faculty of Economics and Business UHO in implementing the SPMI are as follows:

- a. Actively involving all residents of the Faculty of Economics and Business UHO (Lecturers, Education Personnel and Students) from the planning stage to the evaluation stage and SPMI development stage of the Faculty of Economics and Business UHO.
- b. Involving professional organizations, alumni, business, and government as users of graduates, especially at the stage of determining the SPMI standards of the Faculty of Economics and Business UHO.
- c. Define the Quality Assurance organization.
- d. Conducting structured and planned training for lecturers and education personnel in the Faculty of Economics and Business UHO and specifically training as internal auditors.
- e. Socializing the functions and objectives of the SPMI of the UHO Faculty of

- Economics and Business to stakeholders periodically.
- f. Implementation of the SPMI cycle (PPEPP stages).

Implementation of SPMI at the UHO Faculty of Economics and Business Level and the Level of Each Unit

All academic and non-academic work units at every level within the Faculty of Economics and Business UHO must implement SPMI for every activity. The SPMI is managed in the Quality Assurance Unit (UJM), which is directly responsible for the Dean (Figure 1). The task of coordinates, implements, monitors, and evaluates activities to improve educational development and quality assurance. In carrying out its duties, the LPPMP organizes the following functions:

- a. Preparation of plans, programs, and budgets
- b. Implementation of learning improvement and development
- c. Implementation of the education quality assurance system
- d. Coordinating the Implementation of Learning Improvement Activities, Learning Development, and Education Quality Assurance
- e. Monitoring and evaluating learning improvement, learning development, and education quality assurance
- f. Implementation of administrative affairs.

The relationship between the Quality Assurance and Information System Unit (UJMSI) of the Faculty, the Quality Assurance Group (KKJM) of the Department, and the Quality Assurance Monitoring Team (TMJM) of the Study Program with the LPPMP UHO in implementing SPMI is coordinative, consultative, and facilitative (Figure 2). The function of each QA level of quality assurance organisation is different:

- a. University Level: *Total quality management* and *quality assurance* functions
- b. Faculty Level: *Total quality management* and *quality assurance* functions
- c. Department/study program level: *Quality control* function.

VII. LIST OF SPMI STANDARDS FACULTY OF ECONOMICS AND BUSINESS UHO

The Faculty of Economics and Business UHO runs SPMI with reference to 34 quality standards of Halu Oleo University, which include 24 standards based on the expanded National Higher Education Standards and 10 standards developed by Halu Oleo University to support the achievement of Halu Oleo University's vision (Table 1).

Table 1. Formulation of SPMI Standards Faculty of Economics and Business UHO

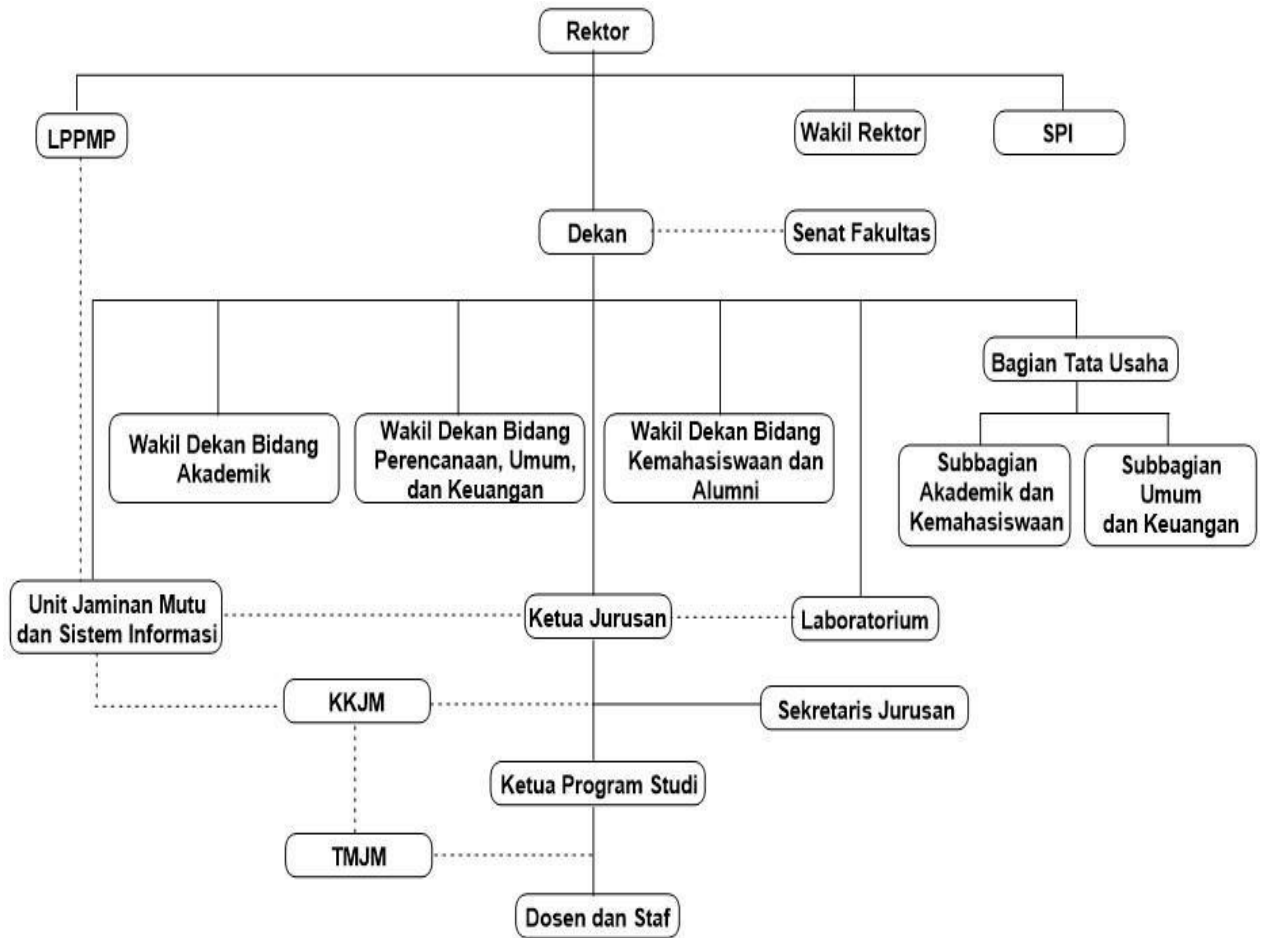
No.	Standard in SPMI
Education Standards:	
1	Graduate Competency Standards
2	Learning Content Standard
3	Learning Process Standard
4	Learning Assessment Standard
5	Standards for Lecturers and Education Personnel
6	Learning Facilities and Infrastructure Standard
7	Learning Management Standard
8	Learning Financing Standard
Research Standards	
9	Research Outcome Standard
10	Research Content Standards
11	Research Process Standards
12	Research Assessment Standards
13	Researcher Standard
14	Research Facilities and Infrastructure Standards
15	Research Result Management Standard
16	Research Funding and Financing Standards
Community Service Standard	
17	Community Service Outcomes Standard
18	Community Service Content Standards
19	Community Service Process Standards
20	Community Service Assessment Standards
21	Community Service Implementation Standard
22	Community Service Facilities and Infrastructure Standards
23	Community Service Management Standards
24	Community Service Funding and Financing Standards
Additional Standards	
25	Information System Standard

26	Governance Standard
27	New Student Service Standard
28	Student and Alumni Standards
29	Vision and Mission Standards
30	Quality Assurance Standard
31	Academic Atmosphere Standard
33	Public Facilities and Infrastructure Standard
34	Campus Environmental Management Standard
35	Co-operation Standard

VIII. SPMI MANUAL LIST

The SPMI manual document consists of 35 manuals that outline the implementation cycle of each Standard in SPMI FEB Universitas Halu Oleo according to the PPEPP stages, with each manual containing the following:

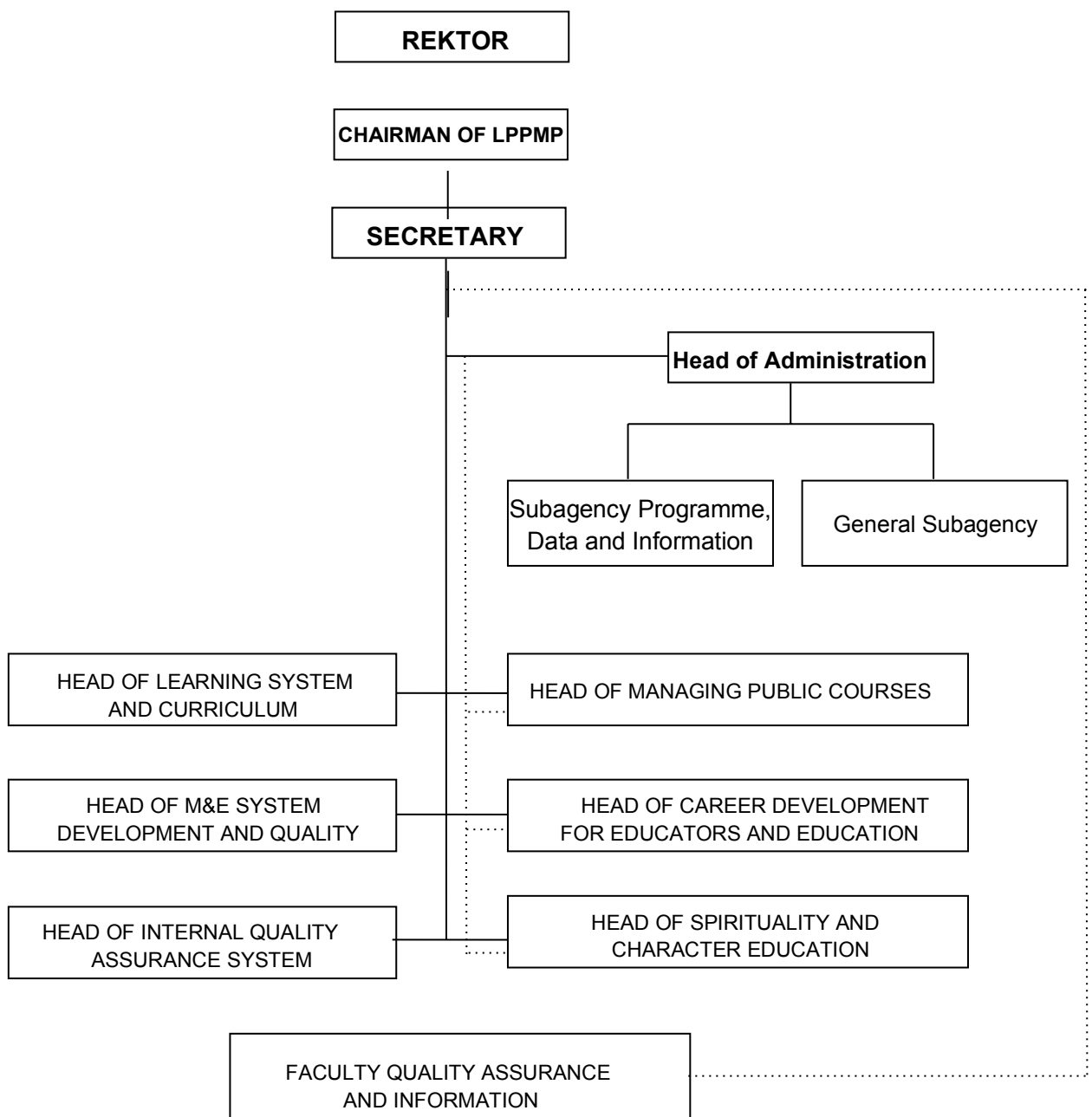
- a. SPMI standard setting stage
- b. SPMI standard implementation stage
- c. Evaluation stage of SPMI standard implementation
- d. SPMI standard implementation control stage
- e. SPMI standard improvement stage



Description:

- Line of Command
- Coordination Line

Figure 1. Organisational Structure of the Faculty of Economics and Business UHO



Description:
 ——— Line of Command
 Coordination Line

Figure 2. Organisational Structure of LPPMP UHO and its relationship with UJMSI Faculty

IX. FORM DOCUMENTS USED IN SPMI

The Forms document contains a collection of forms used in implementing the Standards in SPMI and serves to record/record certain things, information, or activities when the Standards are implemented.

X. RELATIONSHIP OF SPMI POLICY WITH VARIOUS OTHER INTERNAL DOCUMENTS

The UHO Faculty of Economics and Business SPMI policy has a close relationship with several other internal documents:

1. Regulation of the Minister of Education and Culture Number 43 of 2012 concerning the Statute of Halu Oleo University (State Gazette of the Republic of Indonesia Year 2012 Number 660)
2. Regulation of the Minister of Education and Culture Number 149 of 2014 concerning the organization and work procedures of Halu Oleo University (State Gazette of the Republic of Indonesia Year 2014 Number 1682);
3. Rector Regulation of Halu Oleo University Number 2610/UN29/PR/ 2012 Year 2012 concerning the Development Master Plan (RIP) of Halu Oleo University 2012-2045;
4. UHO Rector Regulation Number 1 of 2019 Concerning Academic Regulations at Halu Oleo University
5. Halu Oleo University Strategic Plan Document 2019-2024

The existence of these internal documents becomes the philosophical basis for SPMI policy, SPMI organization, and formulation of Standards in SPMI.

XI. REFERENCES

1. Indonesian Law Number 12 of 2012 on Higher Education.
2. Regulation of the Minister of Education and Culture of the Republic of Indonesia Number 43 of 2012 concerning the Statute of Haluoleo University.
3. Government Regulation of the Republic of Indonesia Number 4 of 2014 concerning the implementation and management of higher education.
4. Regulation of the Ministry of Research Technology and Higher Education No. 62/2016 on the Higher Education Quality Management System.
5. Regulation of the Minister of Research Technology and Higher Education of Indonesia Number 62 of 2016 concerning the organization and work procedures of Halu Oleo University.
6. Regulation of the Minister of Research Technology and Higher Education,

- Number 44 of 2015, concerning National Higher Education Standards.
7. Regulation of the Minister of Research Technology and Higher Education Number 32 of 2016 concerning Accreditation of Study Programmes and
 8. Higher Education.
 9. Regulation of the Minister of Research Technology and Higher Education Number 61 of 2016 concerning Higher Education Databases.
 10. Minister of Research Technology and Higher Education Regulation No. 100/2016 on the establishment, amendment, dissolution of state universities and establishment, amendment, and relocation of private universities Licences.
 11. Rector Regulation of Halu Oleo University Number: 7411/UN29/PR/2014 concerning Amendments to the Rector Regulation of Halu Oleo University Number: 2406a/UN29/LL/2012 concerning Internal Quality Assurance System (SPMI) of Halu Oleo University.